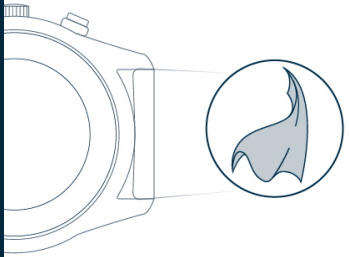
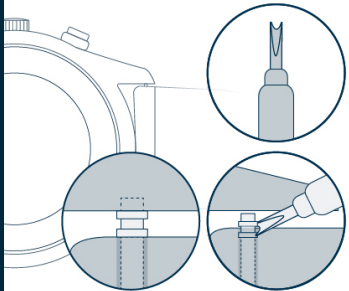


CHANGING A LONGINES LEATHER STRAP



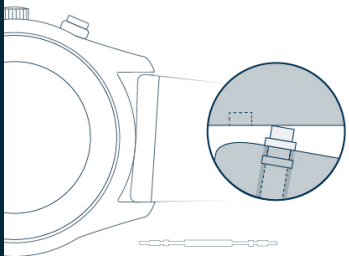
REMOVING THE STRAP

If possible, work on a clean cloth so as not to scratch the watch.



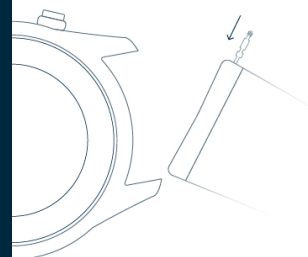
Insert the tool to pull out one side of the bar by pulling the strap against the outside.

Be careful not to scratch the inside of the lugs.



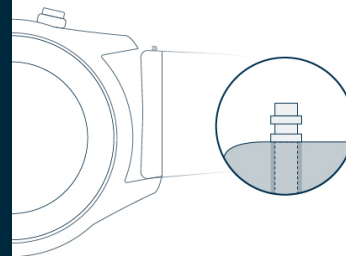
Once the bar is in this position, you can remove the strap.

Remove the bars from your old strap and insert them into the loops on the new strap.

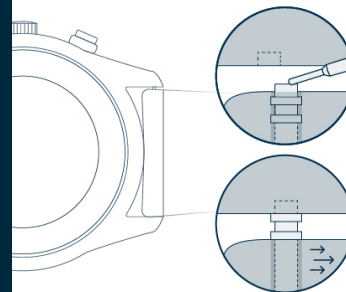


FITTING THE STRAP

Place the bars in your new strap.



Insert one side of the bar.



With the tool, press the bar by pushing the strap between the lugs of the watch.

Once the bar is between the lugs, position the bar in its housing.

Once the strap is on, pull it firmly to make sure it is properly in place.