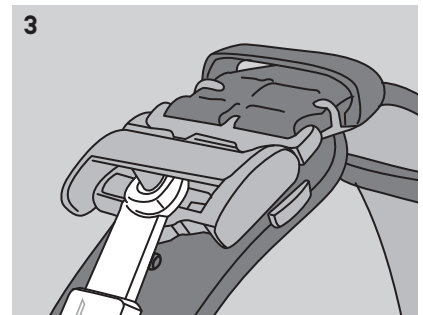
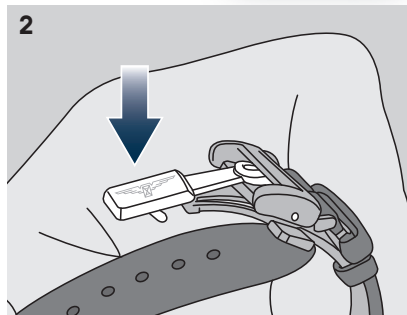
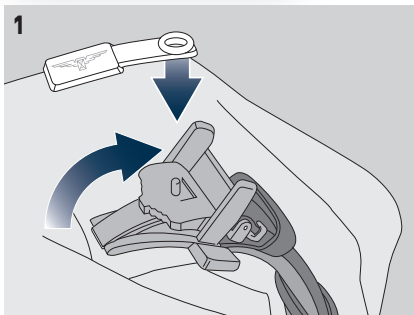


Fixing clip

FOLDING CLASPS



We have devised a plastic fixing clip to avoid damaging bracelets or straps when watches are packaged in a watch box, displayed in a presentation case or on another kind of support. To use the clip, place the pin on the clip in one of the holes in the longer section of the bracelet or strap [1], then slide the clip's brake under the fixed loop [2] to keep the watch closed [3].



BUCKLES

