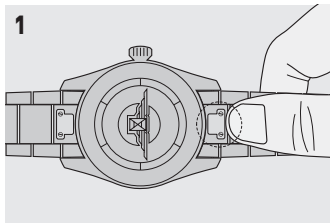


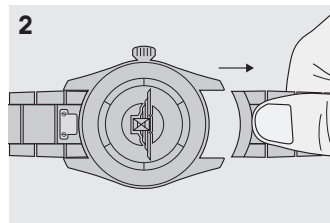
Auswechselbare Armbänder

AUSWECHSELBARES EDELSTAHLARMBAND

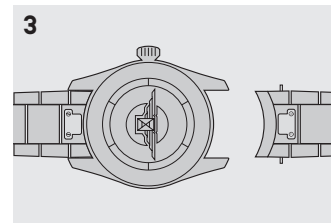
ABNEHMEN DES ARMBANDS



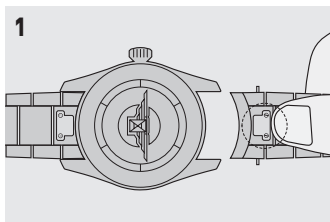
Drücken



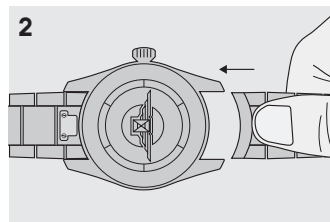
Halten und entfernen



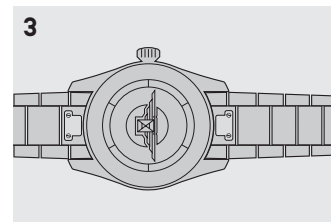
ANBRINGEN DES ARMBANDS



Drücken



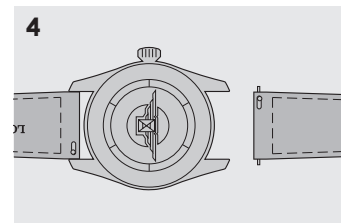
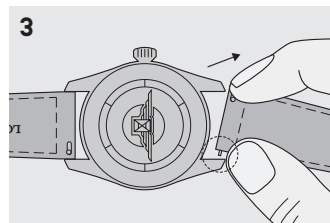
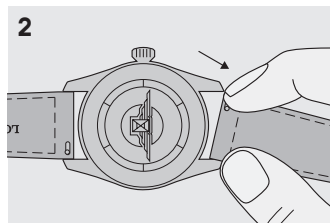
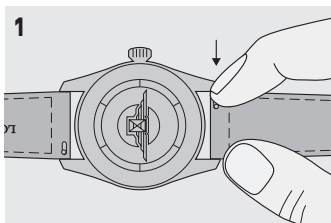
Halten und einsetzen



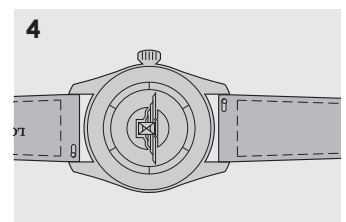
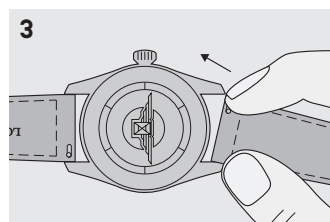
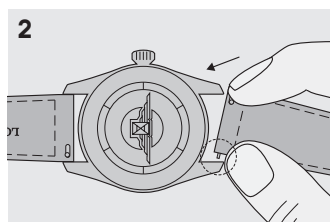
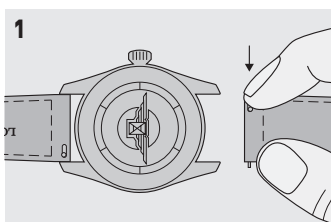
4 Bitte vergewissern Sie sich, dass das Armband korrekt an der Uhr befestigt ist.

AUSWECHSELBARES LEDERARMBAND

ABNEHMEN DES ARMBANDS



ANBRINGEN DES ARMBANDS



5 Bitte vergewissern Sie sich, dass das Armband korrekt an der Uhr befestigt ist.