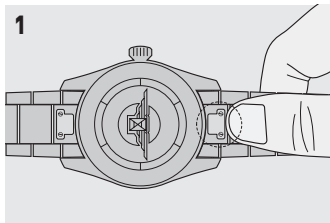


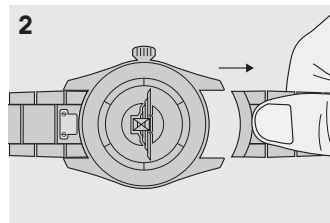
# Interchangeable bracelets

## INTERCHANGEABLE STAINLESS STEEL BRACELET

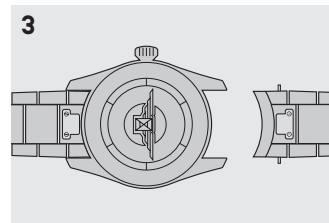
### REMOVING THE BRACELET



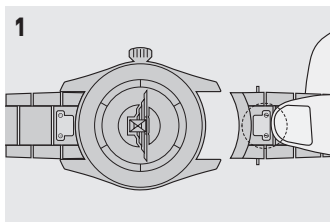
Press



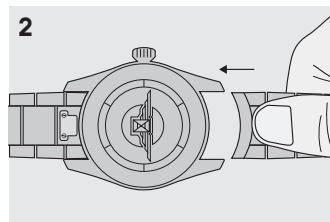
Hold and remove



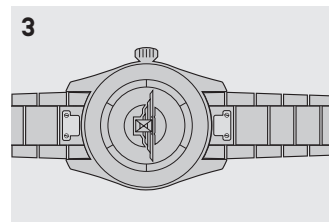
### FITTING THE BRACELET



Press



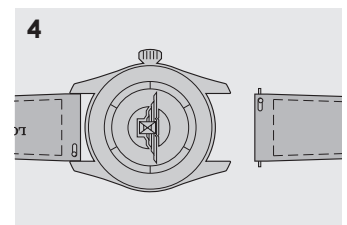
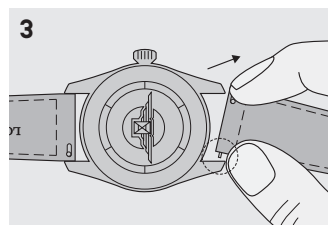
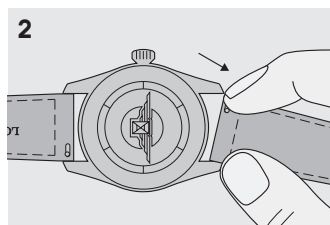
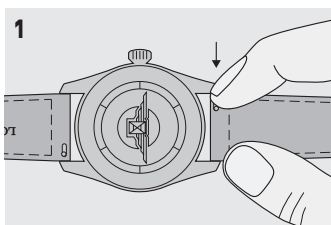
Hold and engage



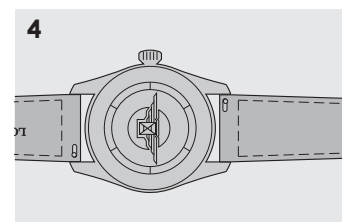
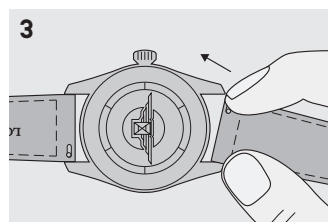
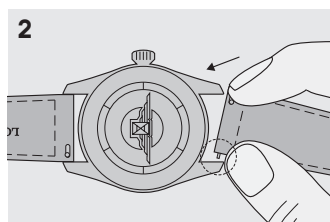
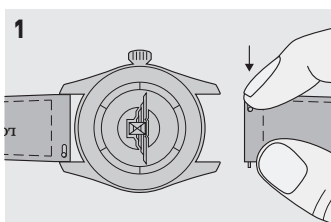
4 Please ensure that the bracelet is firmly attached to the watch.

## INTERCHANGEABLE LEATHER STRAP

### REMOVING THE STRAP



### FITTING THE STRAP



5 Please ensure that the strap is firmly attached to the watch.