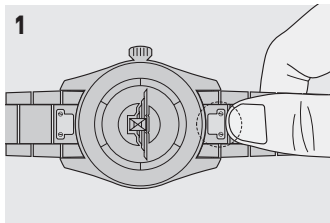


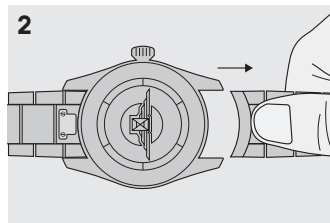
# Pulseras intercambiables

## PULSERA INTERCAMBIABLE DE ACERO INOXIDABLE

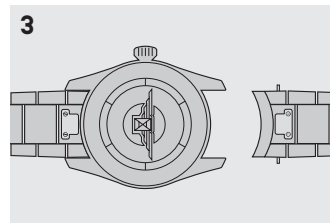
### RETIRADA DE LA PULSERA



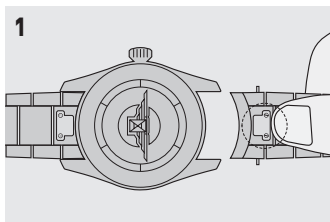
Presionar



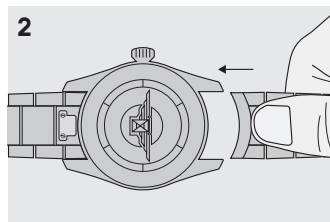
Sujetar y retirar



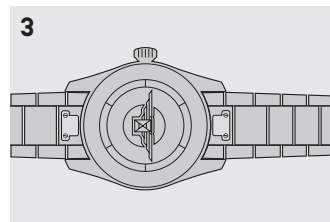
### COLOCACIÓN DE LA PULSERA



Presionar



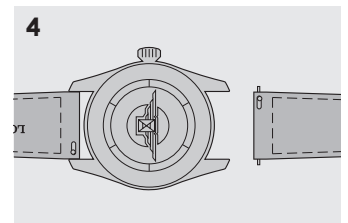
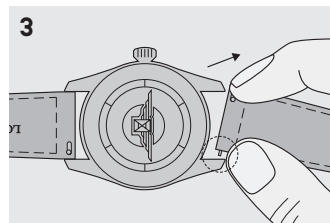
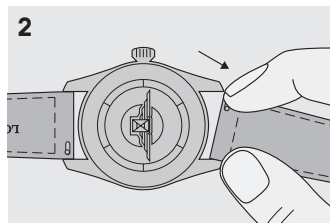
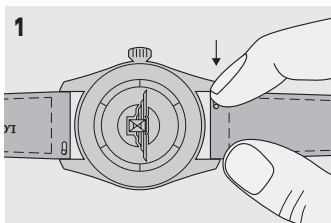
Sujetar y colocar



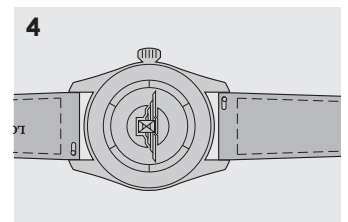
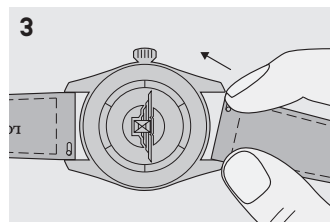
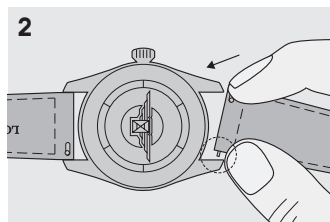
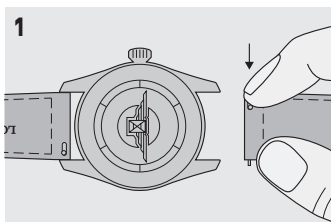
4 | Asegúrese de que la pulsera esté bien sujeta al reloj.

## CORREA INTERCAMBIABLE DE PIEL

### RETIRADA DE LA PULSERA



### COLOCACIÓN DE LA PULSERA



5 | Asegúrese de que la pulsera esté bien sujeta al reloj.