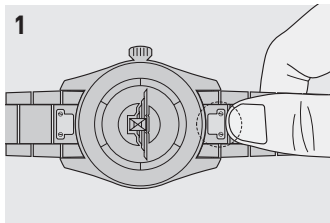


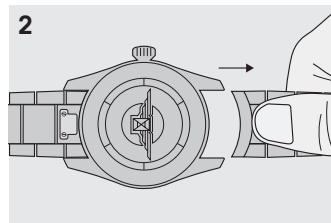
可互換錶帶

可互換不鏽鋼鍊帶

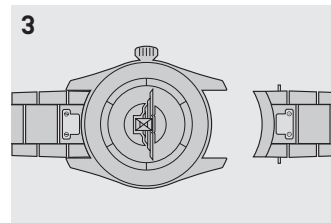
拆下鍊帶



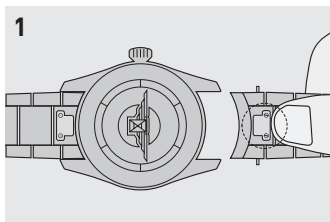
壓下



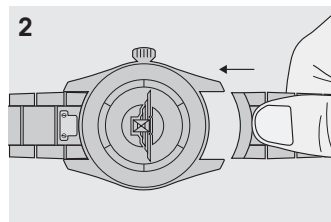
按住並移除



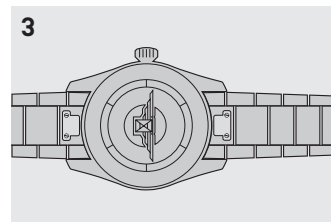
安裝鍊帶



壓下



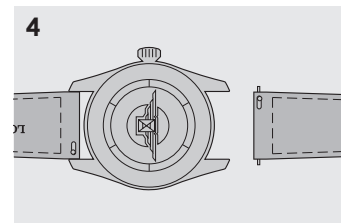
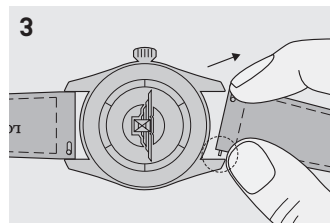
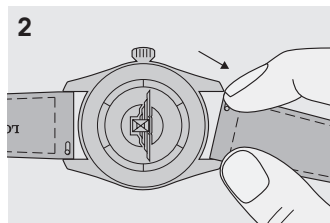
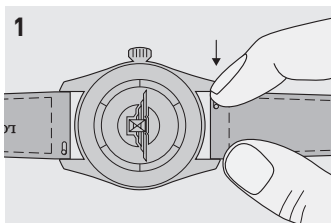
按住並裝上



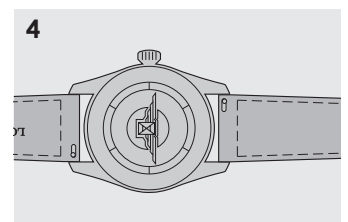
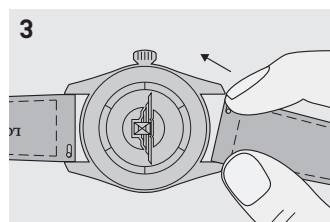
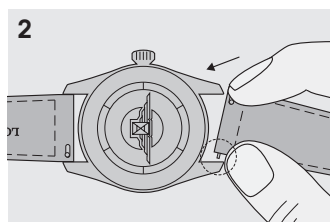
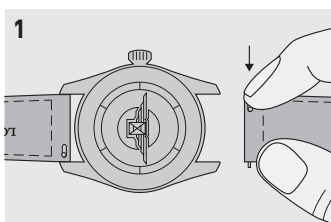
4 請確認鍊帶牢牢固定在腕錶上。

可互換皮革錶帶

拆下錶帶



安裝錶帶



5 請確認錶帶牢牢固定在腕錶上。