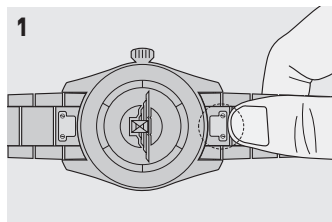


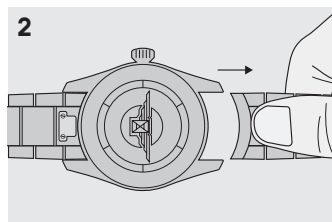
# Braceletes intermutáveis

## BRACELETE EM AÇO INOXIDÁVEL INTERMUTÁVEL

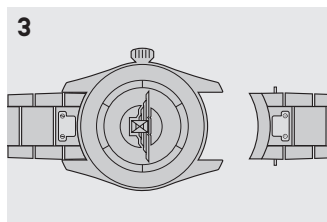
### REMOÇÃO DA BRACELETE



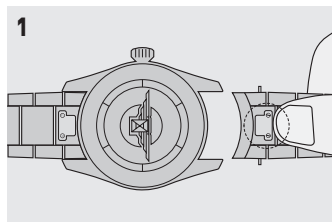
Premir



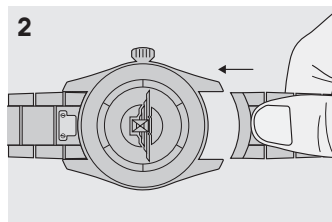
continuamente e remover



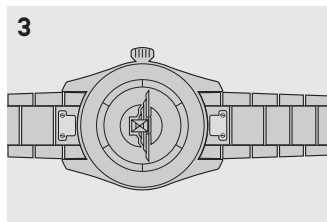
### INSTALAÇÃO DA BRACELETE



Premir



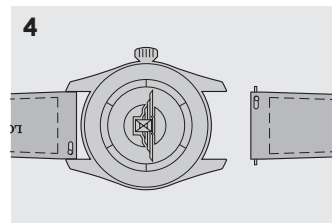
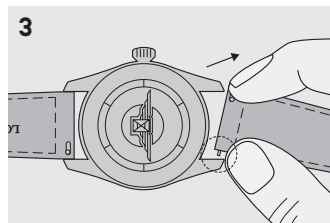
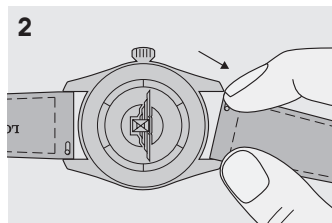
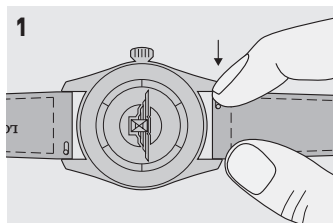
continuamente e colocar



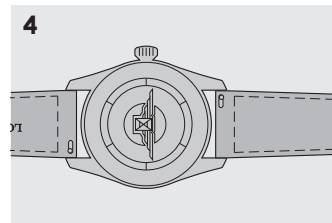
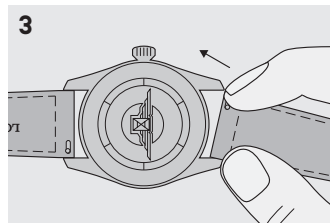
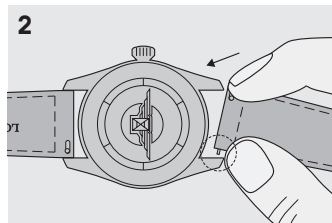
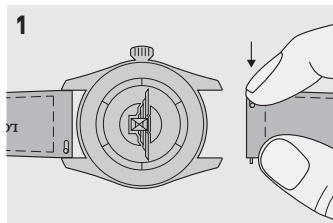
4 | Assegure-se de que a bracelete está firmemente fixada ao relógio.

## BRACELETE EM PELE INTERMUTÁVEL

### REMOÇÃO DA BRACELETE



### INSTALAÇÃO DA BRACELETE



5 | Assegure-se de que a bracelete está firmemente fixada ao relógio.